

1 Presentation

The LiveIn2 scenario BHz transmitter is a wireless wall control, which enables the launching of 2 scenarios programmed in the LiveIn2 box.

2 Commissioning the LiveIn2 scenario transmitter: Save and set up the first time

- 1- Connect to the LiveIn2 app
- 2- Go to the General menu/"Configuration"
- 3- Click on the "Add Equipment" button then on the "BHz technology range" and finally on the "transmitter type".
- 4- As shown on the display, press 3s on the prog button of scenario transmitter. Your transmitter is registered in LiveIn2.
- 5- Then configure from this menu the equipment and/or scenarios to play directly from the 2 buttons of the transmitter.
- 6- Rename the transmitter before completing. The scenario transmitter is ready for use. You will find it :
 - inside the list of configured equipment of your LiveIn2 (to edit its name or to delete it).
 - in the equipment menu of the app to edit it and set it again (see §4).

3 Use the LiveIn2 scenario transmitter

Once the scenarios from the application are set onto each button of the transmitter, they should be launched directly from the transmitter. For that your LiveIn2 box must be plugged. The stop button of the transmitter enables to stop the running scenario. By pressing it, the equipment driven by the scenario stops automatically.

4 Modifying the LiveIn2 scenario transmitter settings

At any time, you will find the scenario transmitter in the app's menu equipment. It will enable the modification of played scenario by pressing on the button "Setup transmitter" and then on the (scenario) to setup. Make wished changes in terms of equipment/scenario to play. Save before leaving the menu.

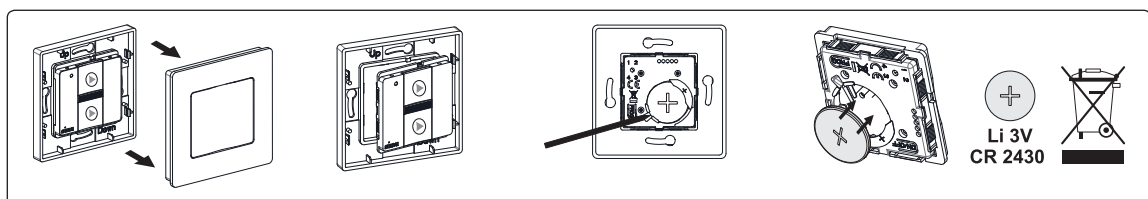
For more information concerning the scenario transmitter use, visit the [livein.simu.com](http://www.livein.simu.com) website.

5 Technical data

- **Compatible with receivers** LiveIn², io-homecontrol®

- Wireless switch/class III – Protection Index: IP30
- Maximum transmission time: 10 seconds
- Ambient temperature of use : 0T60 (0°C / +60°C)
- Storage temperature: -30°C to + 70°C
- Transmitter range: 15m through 2 concrete walls in normal pollution condition).
- Power: 3V lithium battery type CR 2430. Lifetime ± 5 years when 4 pressures of 1s. / day.
- Keep away from children
- Do not position the transmitter near metal in order to ensure its good working (reduced range).
- A radio appliance using the same frequency may deteriorate our product's performance.
- Do not immerse the product, avoid splashing of liquids.
- Do not use abrasive products or solvents to clean the product.
- Frequency range:
868.700 MHz - 869.200 MHz; F: 868.950 MHz
- Max power used: ERP < 25 mW

6 Replacement of the battery



- Power supply is not required for saving data. Data need not be programmed once again when the cell is changed.
- Do not recharge the battery.
- Please separate and dispose of the appliance, batteries and used batteries in a dedicated recycling point.